



DETAIL A
SCALE 1 : 1

Professional *Plus*

*the new generation
in field and lab water
quality instruments*

*detachable field probes
and rugged cables mean
less downtime*

*convert from field to
lab probes in seconds*

*report parameters and
units to fit your needs*

*log data and manage
data with desktop
software*

*no connection for
software upgrades*



Professional Plus

The rugged design and field-worthiness of the Professional Plus instrument allows you to perform your job with confidence even in the harshest field conditions and with the

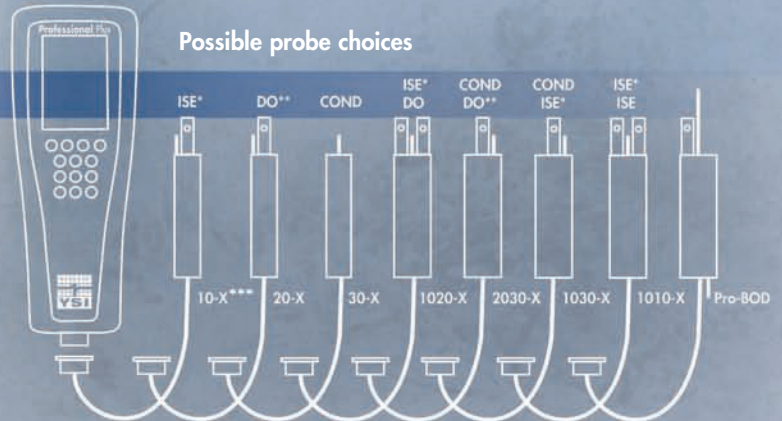


- DO, pH, Conductivity, ORP, Ammonium, Nitrate, Chloride, Salinity, Total Dissolved Solids, Barometric Pressure
- 2,000 data-set memory with GLP event logging
- Interval or single-event logging capability
- Rubber, over-molded IP-67 water proof case
- 3-year instrument warranty; 2-year cable warranty
- User-upgradeable software via USB
- Backlit display AND keypad
- Graphic display with detailed Help
- Rugged cables, connectors, and probes



The **YSI Professional Plus** accommodates any combination of Pro Series probe, cable, and accessory. This compact handheld includes multiple languages, detailed GLP data, on-screen Help functionality, auto-buffer recognition, mil-spec connectors, re-cal prompts, auto-stable and security passwords to help make your job easier.

Finally, a professional instrument for a true professional.



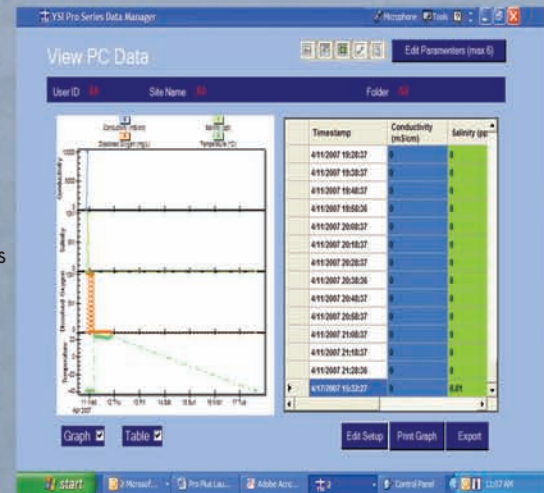
- * Choice of ISE; pH, ORP, pH/ORP (not recommended on the 1010-X cable)
Choice of ISE; Ammonium, Nitrate, or Chloride for fresh water only
- ** Choice of DO; Galvanic, Polarographic
- *** Lab-grade pH and ORP cable/probe options available
- X= Choice of cable length: 1, 4, 10, 20, 30-meter all (up to 100-meters on 20-X only)

connect from field to lab probes in seconds



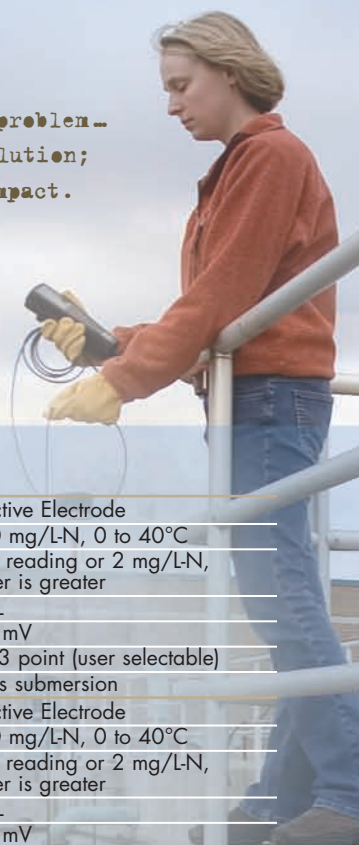
Data Manager Software

- Easy-to-use software to manage all your data, set up instruments, or conduct real-time studies
- View graphical and tabular data
- USB connection also powers the instrument



lowest overall cost of ownership. Interchangeable probes and cables reduce down-time and keeps the Pro Plus ready whenever and wherever you are - field or lab.

if complexity is the problem...
ease of use is the solution;
productivity is the impact.



SPECIFICATIONS

(SYSTEM W/4-METER CABLE AND PROBES)

Dissolved Oxygen (%)	Sensor Type	Polarographic or Galvanic
	Range	0 to 500%
	Accuracy	0 to 200% ± 2% of reading or 2% air saturation, whichever is greater 200% – 500% ± 6% of reading
	Resolution	1% or 0.1% air saturation (user selectable)
	Calibration	1 point and zero
Dissolved Oxygen (mg/L)	Sensor Type	Polarographic or Galvanic
	Range	0 to 50 mg/L
	Accuracy	0 to 20 mg/L (±2% of the reading or 0.2 mg/L, whichever is greater) 20 to 50 mg/L (±6% of the reading)
	Resolution	0.1 or 0.01 mg/L (user selectable); 0.1% air saturation
	Calibration	1 point and zero
Temperature (Field rugged cables)	Range	-5 to 70°C
	Accuracy	±0.2°C
	Resolution	0.1°C
	Units	°C, °F, K
Temperature (Lab-grade)*	Range	-5 to 70°C
	Accuracy	±0.35°C
	Resolution	0.1°C
	Units	°C, °F, K
	Depth	4-meters submersion
Conductivity**	Sensor Type	Four electrode cell
	Range	0 to 200 mS/cm
	Accuracy	±0.5% of reading or 0.001 mS/cm, whichever is greater (4-m cable) ±1% of reading or 0.001 mS/cm, whichever is greater (20-m cable)
	Resolution	0.001 mS/cm to 0.1 mS/cm (range dependent)
	Units	µS, mS
	Calibration	1 point
Salinity	Sensor Type	Calculated from conductivity and temperature
	Range	0 to 70 ppt
	Accuracy	±1.0% of reading or 0.1 ppt, whichever is greater
	Resolution	0.01 ppt
	Units	ppt, PSU
pH	Sensor Type	Glass Combination Electrode
	Range	0 to 14 units
	Accuracy	±0.2 units
	Resolution	0.01 units
	Calibration	1, 2, 3, 4, 5, or 6 point (user selectable); US, NIST or Custom Buffers
ORP	Sensor Type	Platinum button
	Range	-1999 to +1999 mV
	Accuracy	+/-20 mV in redox standards
	Resolution	0.1 mV
	Calibration	1 point

Ammonium***	Sensor Type	Ion Selective Electrode	
	Range	0 to 200 mg/L-N, 0 to 40°C	
	Accuracy	±10% of reading or 2 mg/L-N, whichever is greater	
	Resolution	0.1 mg/L	
	Units	mg/L-N, mV	
	Calibration	1, 2, or 3 point (user selectable)	
Nitrate***	Sensor Type	Ion Selective Electrode	
	Range	0 to 200 mg/L-N, 0 to 40°C	
	Accuracy	±10% of reading or 2 mg/L-N, whichever is greater	
	Resolution	0.1 mg/L	
	Units	mg/L-N, mV	
	Calibration	1, 2, or 3 point (user selectable)	
Chloride***	Sensor Type	Ion Selective Electrode	
	Range	0 to 1000 mg/L, 0 to 40°C	
	Accuracy	± 15% of reading or 5 mg/L, whichever is greater	
	Resolution	0.1 mg/L	
	Units	mg/L-Cl, mV	
	Calibration	1, 2, or 3 point (user selectable)	
Total Dissolved Solids (TDS)	Sensor Type	Calculated from conductivity and temperature	
	Range	0 to 100 g/L Cal constant range 0.30 to 1.00 (0.64 default)	
	Resolution	0.001, 0.01, 0.1g/L	
	Units	kg/L, g/L	
	Barometer	Sensor Type	Piezoresistive
		Range	375 to 825 mmHg
Accuracy		±3 mmHg within ±15°C from calibration point	
Resolution		0.1 mmHg	
Units		mmHg, inHg, mbar, psi, kPa, ATM	
Calibration	1 point		

(INSTRUMENT ONLY AT AMBIENT TEMPERATURE)

pH	Range	-2.60 to 16.60
	Accuracy	+/-0.1 mV (0.01 pH units)
	Resolution	0.1 mV (0.01 pH units)
ORP	Range	-1999 to +1999 mV
	Accuracy	+/-0.5 mV
	Resolution	0.01 mV
Conductivity	Range	0.0 to 200 mS/cm
	Accuracy	+/-0.3% FS +/-1 digit for each range
	Resolution	0.0001 mS/cm or 0.1 uS/cm to 0.1 mS/cm (range dependent)
Dissolved Oxygen	Range	0.00 to 90 mg/L; 0 to 550%
	Accuracy	+/-0.2% FS (550% air saturation) +/- 1 digit (with 1.25 PE membrane at 10°C)
	Resolution	0.01 mg/L; 0.1% air saturation
Temperature	Range	-10 to 100.00C
	Accuracy	+/-0.2% FS (550% air saturation) +/- 1 digit (with 1.25 PE membrane at 10°C)
	Resolution	0.1C
	Units	C, F, K

* Lab-grade field cables include 605107, -108, -109, 605177, -178, -179

** Derived parameters can include resistivity, salinity, specific conductance, and total dissolved solids

*** ISE sensors for freshwater only



To order or for more information, contact YSI Environmental.

800 897 4151
www.YSI.com

YSI Environmental
1700/1725 Brannum Lane
Yellow Springs, Ohio 45387
+1 937 767 7241
+1 937 767 9353 fax
proseries@YSI.com

SonTek/YSI
+1 858 546 8327
+1 858 546 8150 fax
inquiry@SonTek.com

YSI Integrated Systems & Services
+1 508 748 0366
+1 508 748 2543 fax
systems@YSI.com

YSI Gulf Coast
+1 225 753 2650
+1 225 753 8669 fax
environmental@YSI.com

YSI Hydrodata
European Support Centre
+44 1462 673581
+44 1462 673582 fax
europe@ysi.com

YSI Hydrodata (Ireland)
+353 87 2430264
+353 46 9487637 fax
ireland@YSI.com

YSI (Hong Kong) Limited
+852 2891 8154
+852 2834 0034 fax
hongkong@ysi.com

YSI Middle East (Bahrain)
+973 17536222
+973 17536333 fax
halsalem@ysi.com

Nanotech/YSI (Japan)
+81 44 222 0009
+81 44 221 1102 fax
nanotech@YSI.com

YSI China
+86 10 5203 9675
+86 10 5203 9679 fax
beijing@ysi-china.com

ISO 9001
ISO 14001

(Yellow Springs facility)

Pure Data for a Healthy Planet and Who's Minding the Planet are registered trademarks of YSI Incorporated.

Y S I *incorporated*
Who's Minding
the Planet?[™]

©2007 YSI Incorporated
Printed on recycled paper in USA
W14 0507

Professional *Pro*

STEP 1

ORDER INSTRUMENT

(INSTRUMENT INCLUDES DATA MANAGER SOFTWARE, THE COMMUNICATIONS SADDLE, AND USB CABLE)

605000 Professional Plus

STEP 2

ORDER CABLE(S)*

(ALL CABLES INCLUDE TEMPERATURE; CABLES OVER 1-METER INCLUDE CABLE MANAGEMENT KIT)

60510-1, 4, 10, 20 or 30-meter ISE**/temp

60520-1, 4, 10, 20 or 30-meter*** DO/temp

60530-1, 4, 10, 20 or 30-meter conductivity/temp

6051010-1, 4, 10, 20 or 30-meter ISE/ISE/temp

6051020-1, 4, 10, 20 or 30-meter ISE/DO/temp

6051030-1, 4, 10, 20 or 30-meter ISE/conductivity/temp

6052030-1, 4, 10, 20 or 30-meter DO/conductivity/temp

605107 1-meter single-junction probe and cable for pH/temp

605177 4-meter single-junction probe and cable for pH/temp

605108 1-meter single-junction probe and cable for ORP/temp

605178 4-meter single-junction probe and cable for ORP/temp

605109 1-meter single-junction probe and cable for pH/ORP/temp

605179 4-meter single-junction probe and cable for pH/ORP/temp

STEP 3

ORDER PROBE(S)

605202 Galvanic DO

605203 Polarographic DO

605780 Self-stirring BOD

605101 pH (ISE)

605102 ORP (ISE)

605103**** pH/ORP combination (ISE)

605104 Ammonium (ISE)

605105 Chloride (ISE)

605106 Nitrate (ISE)

STEP 4

ORDER SOLUTIONS

3161 1,000 us/cm conductivity solution (quart)

3163 10,000 us/cm conductivity solution (quart)

3169 50,000 us/cm conductivity solution (8 pints)

3682 Zobell, ORP solution (125 mL)

3824 pH 4, 7, 10 buffers (2 pints each)

3841 1 mg/L ammonium solution (500 mL)

3842 10 mg/L ammonium solution (500 mL)

3843 100 mg/L ammonium solution (500 mL)

3885 1 mg/L nitrate solution (500 mL)

3886 10 mg/L nitrate solution (500 mL)

3887 100 mg/L nitrate solution (500 mL)

STEP 5

ORDER ACCESSORIES

603059 Flow Cell, Standard, 203 mL

603077 Flow Cell Kit, 1 or 2 Port Probe (includes 603059 & 603078)

603078 Flow Cell Adapter, Single Port

603056 Flow Cell Mounting Spike

603075 Carrying Case, Soft-Sided

603074 Carrying Case, Hard-Sided

603069 Belt Clip

063517 Ultra Clamp

063507 Tripod Clamp

603062 Cable Management Kit

605978 Weight, Probe/Cable, 4.9 oz.

063019 Weight, Probe/Cable, 24 oz., 3"

063020 Weight, Probe/Cable, 51 oz., 6"

* Cables with conductivity include probe (no need to order conductivity probe)

** ISEs include pH, ORP, Ammonium, Nitrate, Chloride

*** Special order cables up to 100-meters are available with 60520 cables

**** Not recommended for 6051010 cables. Only pH would be reported.



603059 Flow Cell

603069 Belt Clip

603075 Soft-sided Carrying Case

605978 Cable Weights

